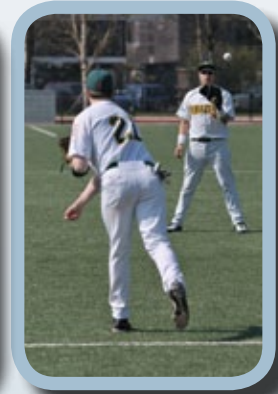
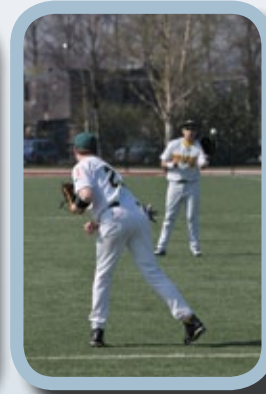
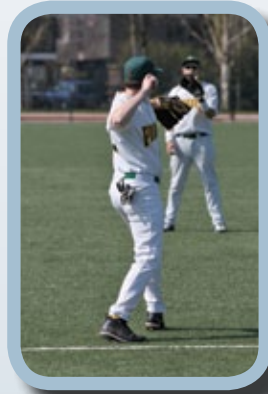


RADAR SENSORS FOR BASEBALL AND SOFTBALL PLAYERS

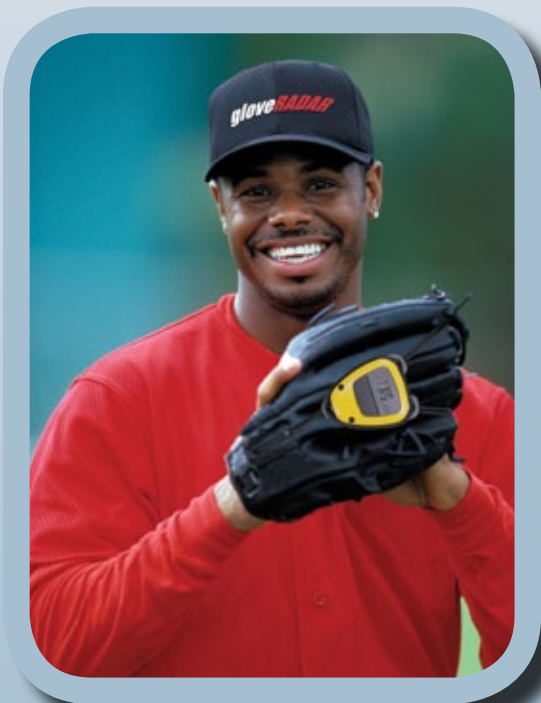
The GloveRadar is a small, lightweight device that attaches to the back of any ball glove, 'sees' through the glove, and measures the speed of baseballs or softballs just before they are caught. It is used to help develop the proper throwing mechanics of infielders, outfielders, catchers as well as pitchers, by providing immediate ball velocity feedback to reinforce coaching instructions



- » The Glove Radar is not an impact sensor or timer but is an actual Doppler radar, like conventional hand-held sports and police radar speed guns.
- » The Glove Radar accuracy is comparable to that of the more expensive radar guns when measuring ball speed in the same relative location (into the glove).



- » When using the GloveRadar you can throw from any distance and measure the speed of the ball just before it is caught. Measure speeds from 20 km/h to over 160 km/h.
- » Everyone has fun using the Glove Radar. Tie it on your glove and turn it into your own radar speed gun!!



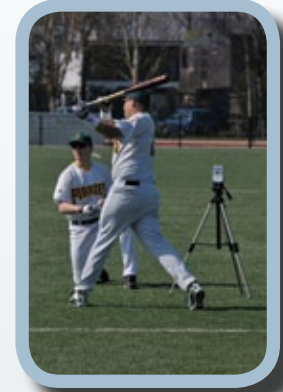
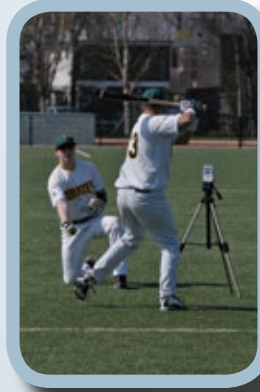
**“IMPROVE YOUR
THROWING SKILLS
WITH ACCURATE
DOPPLER RADAR
SPEED MEASUREMENTS.”**

Ken Griffey Jr., All-Century Centerfielder



The Swing Speed Radar is a small, affordable velocity sensor using Doppler radar technology for measuring baseball/softball bat speed to help players optimize their swing mechanics. It is used by baseball/softball players striving to improve their distance, control and accuracy.

» Increased swing speed corresponds to increased ball distance. However, over-swinging can produce inferior results, 'it's not how hard you swing but how well you swing'.



» Players can measure their swing speed, determine their speed for optimum performance, monitor their swing consistency and select the bat characteristics that best suit their swing.

- » The Swing Speed Radar is a valuable aid for players of all ages and skill levels. Coaches enjoy the immediate feedback provided by the radar to reinforce instructions to "hit the ball out front" and it is a great tool to help select the optimum bat size and bat weight for the player.
- » The SwingSpeed Radar is used by many professional and amateur base- and softball players and coaches, like Mike Candrea, 2007 USA Softball National Team Head Coach or Jim Lefebvre, ex-Major League player, manager and hitting instructor at his baseball school.

TECHNICAL SPECIFICATIONS GLOVE RADAR:

- Powered by a 3 Volt, 160mAh Lithium button cell battery
- Microprocessor-controlled
- Indicates kilometer-per-hour (also available in miles-per-hour)
- Easy-to-read 2 ½ inch liquid crystal display
- Ranging from 20 to over 160 km/h
- ROHS, CE, FCC compliant

TECHNICAL SPECIFICATIONS SWINGSPEED RADAR:

- Powered by three AA-size batteries
- Microprocessor-controlled
- Indicates miles-per-hour or kilometer-per-hour
- Easy-to-read 3 inch liquid crystal display
- Ranging from 32 to over 320 km/h
- ROHS, CE, FCC compliant

EUROPEAN DISTRIBUTION:

SportsSensors Europe/ IDCP
 Energiestraat 23A
 1411 AR Naarden
 The Netherlands
 info@sportssensors.eu



WWW.SPORTSSENSORS.EU

YOUR LOCAL RESELLER: